

For Sale

206 Southern Heights, Phase 2 Balls, Christ Church



A KIRTON REALTY SERVICES
"Let's reach your goal together"



Residential

Land

Available

206 Southern Heights, Phase 2 Balls, Christ Church

BBD \$165,000

Details

 Price \$165,000  Lot Area 6,293.65 ft²

This lot located in the well sought after neighbourhood of Southern Heights in Christ Church is newly available for sale! – The lot is flat, rectangular and measures 6,293.65 sq. ft. Southern Heights is literally just off the Tom Adams Section of the ABC Highway and is popular for its proximity to Oistins, the nearest commercial center, the South Coast and its beaches.

✉ info@akirtonrealty.com

☎ 1-(246)-232-0464

☎ 1-(246)-851-5132

☎ 1-(246)-432-7191

☎ 1-(246)-851-5130

🌐 akirtonrealty.com  akirtonrealty  A Kirton Realty



Pg 1 of 5

For Sale

206 Southern Heights, Phase 2 Balls, Christ Church



A KIRTON REALTY SERVICES
"Let's reach your goal together"

Location

📍 206 Southern Heights Phase 2 Balls Bridgetown Christ Church



Nearby Places

Supermarkets	📍	🚗
Massy Stores Supermarket Worthing	0.8 km	2 mins
Price Lo Supermarket	2.0 km	5 mins
Popular Discounts Kendal Hill	4.4 km	8 mins
Clifton Market Worthing	1.3 km	4 mins
Massy Stores Supermarket Oistins	6.5 km	11 mins
Gas Stations	📍	🚗
Sol Gas Station	1.0 km	3 mins
Sol Gas Station	4.0 km	6 mins
Willey RUBIS	2.1 km	5 mins
Sol Gas Station	1.8 km	4 mins
Esso Worthing Sol Store	1.0 km	3 mins
Schools	📍	🚗
St. Lawrence Primary School	1.8 km	5 mins
Wills Primary School	3.1 km	8 mins
Arthur Smith Primary School	2.9 km	6 mins

✉ info@akirtonrealty.com

☎ 1-(246)-232-0464

☎ 1-(246)-851-5132

☎ 1-(246)-432-7191

☎ 1-(246)-851-5130

For Sale

206 Southern Heights, Phase 2 Balls, Christ Church



A KIRTON REALTY SERVICES
"Let's reach your goal together"

Schools		
Graydon Sealy Secondary School	3.5 km	8 mins
Parkinson Memorial Secondary School	3.6 km	7 mins
Churches		
The Church of Jesus Christ of Latter-day Saints	1.1 km	3 mins
Hawthorn Methodist Church	0.7 km	2 mins
El-Bethel Apostolic Church	1.4 km	3 mins
St. Lawrence Anglican Church	1.9 km	5 mins
St. Matthias' Anglican Church	3.2 km	7 mins
Restaurants		
IslandLife Salads and Sides	1.2 km	3 mins
The Worthing Square Food Court	1.0 km	3 mins
Yuh So Nice	1.3 km	4 mins
Mojo	1.2 km	4 mins
Bacco Pizza	1.0 km	3 mins
Beaches		
Worthing Beach	1.1 km	3 mins
Rockley Beach	1.9 km	5 mins
Dover Beach	2.5 km	7 mins
Dover Beach	2.4 km	7 mins
Brownes Beach	4.6 km	9 mins
Attractions		
Premier Attractions	4.8 km	11 mins
Harrison's Cave Eco-Adventure Park	17.5 km	28 mins
The Richard Haynes Boardwalk	2.7 km	6 mins
George Washington House	3.9 km	8 mins
Welchman Hall Gully	17.9 km	27 mins

✉ info@akirtonrealty.com

☎ 1-(246)-232-0464

☎ 1-(246)-851-5132

☎ 1-(246)-432-7191

☎ 1-(246)-851-5130

For Sale

206 Southern Heights, Phase 2 Balls, Christ Church



A KIRTON REALTY SERVICES
"Let's reach your goal together"

Photos



✉ info@akirtonrealty.com

☎ 1-(246)-232-0464

☎ 1-(246)-851-5132

☎ 1-(246)-432-7191

☎ 1-(246)-851-5130

🌐 akirtonrealty.com  akirtonrealty  A Kirton Realty

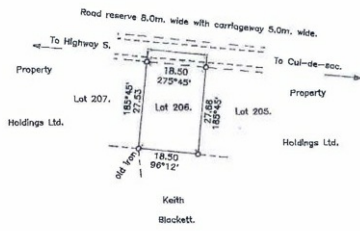


For Sale

206 Southern Heights, Phase 2 Balls, Christ Church



A KIRTON REALTY SERVICES
"Let's reach your goal together"



Barbados

PLAN OF LAND bordered green and brown
at Southern Heights Phase 2, Balls, Christ Church. (Lot 206)
containing Land 510.7 sq.m.
Verge 27.8 sq.m.
Carriageway 46.2 sq.m.
584.7 sq.m.
Surveyed for Property Holdings Ltd.
Certified March 11, 2005.

SCALE 1 : 1000

Distances are in metres
Bearings are referred to Grid North
derived from previous survey.
See D.L.S. recorded plan no. 389/2005.
See T.C.P.O. ref. no. 1085/05/01D.
o---denotes iron unless otherwise stated.
For Lands and Surveys Dept. only

Floor Plans

✉ info@akirtonrealty.com

☎ 1-(246)-232-0464

☎ 1-(246)-851-5132

☎ 1-(246)-432-7191

☎ 1-(246)-851-5130

🌐 akirtonrealty.com 📘 akirtonrealty 📷 A Kirton Realty

